



## PUBLIC SUMMARY REPORT

### TRACEABILITY TO PLANTATION ASSESSMENT

**Name of Parent Company:** Tradewinds Plantation Berhad

**Name of Palm Oil Mill:** Permai Palm Oil Mill

**Mill MPOB License No.:** 500115604000

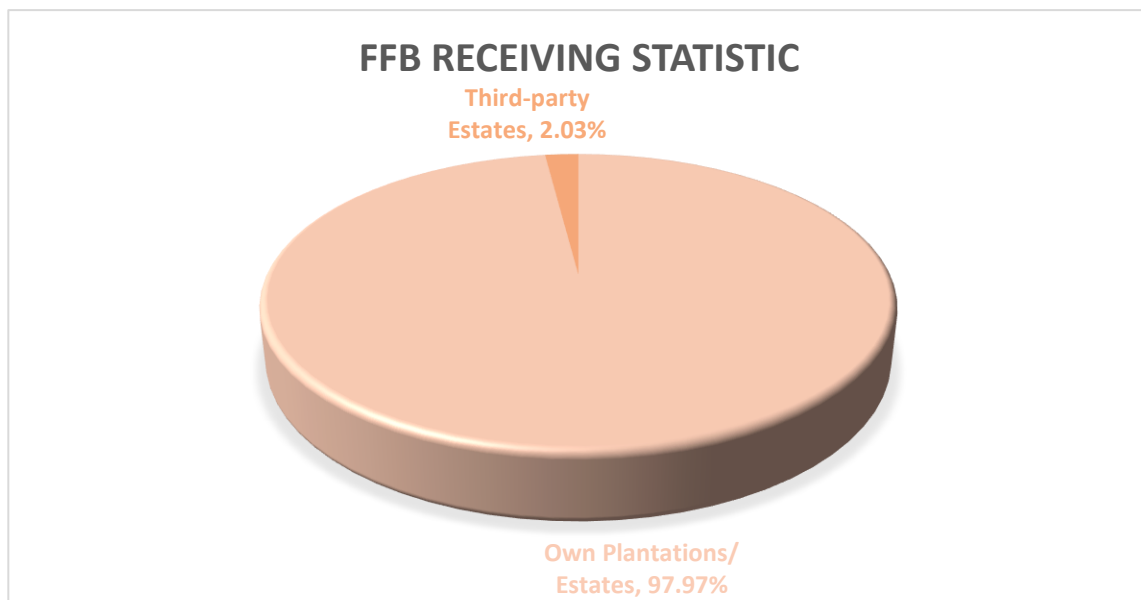
**Mill Address:** Permai Palm Oil Mill, P.O. Box 60834, 91117 Lahad Datu, Sabah

**GPS Coordinate of Palm Oil Mill:** 5.1872, 118.4413

**Supplied Mewah's Refineries:** Mewah Datu Sdn Bhd (Lahad Datu)

**Assessment Date:** 08<sup>th</sup> December 2022 (Tuesday)

#### A. Fresh Fruit Bunch (FFB) Traceability:

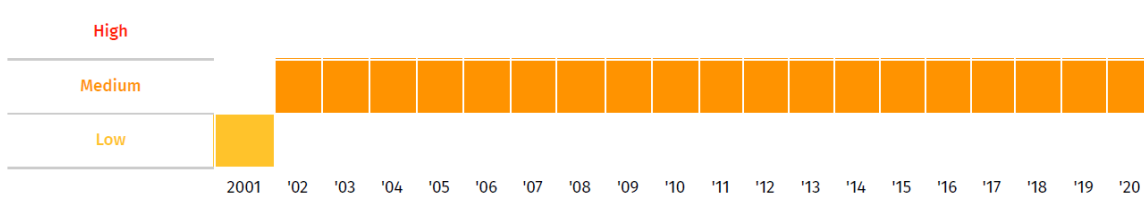


FFB Sources	TTP Score	Overall TTP Score %
Own Plantations/ Estates	100%	<b>100%</b>
3 <sup>rd</sup> Party Plantations/ Estates	100%	
Dealers	NA	
Smallholders	NA	





## B. Environmental Risk Analysis

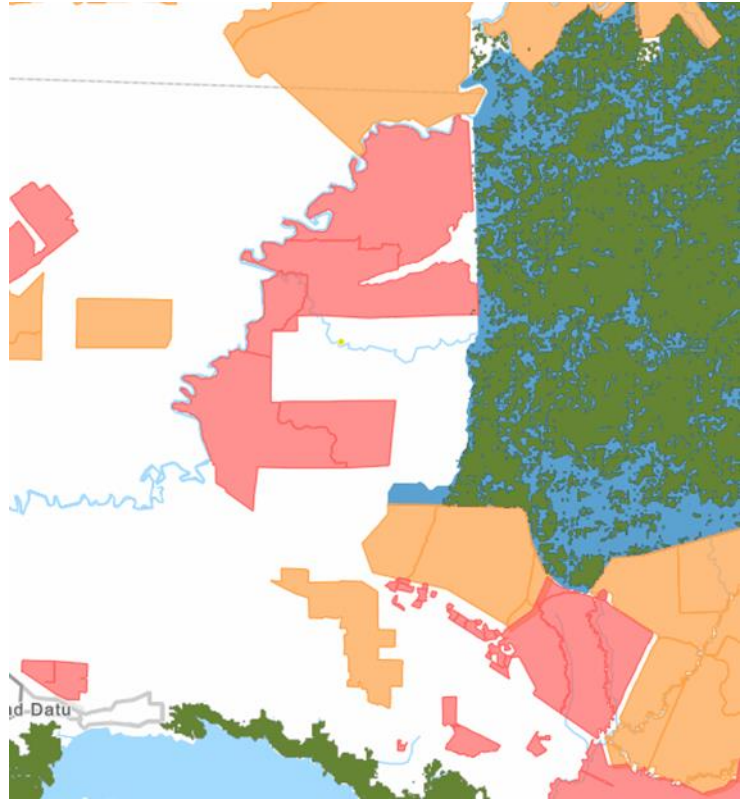
Assessment Date: 21<sup>st</sup> December 2022

1. Environmental risk assessment is carried out within theoretical FFB catchment area (50km radius) in Permai Palm Oil Mill.
2. The overall environmental risk ranking of Permai Palm Oil Mill is summarized as follows.

Summary	Mill Priority (Threat + Value)	Threat (Overall)	Value (Overall)																															
	Medium	Medium	Medium																															
Forest change	<p><b>Percentage of Historic Area Lost</b></p> <table border="1"> <thead> <tr> <th></th> <th></th> <th>Loss, all years (ha)</th> <th>TREE COVER EXTENT 2000 (ha)</th> </tr> </thead> <tbody> <tr> <td>Tree Cover Loss</td> <td>31.40%</td> <td>178,061</td> <td>567,150</td> </tr> <tr> <td>Primary Forest</td> <td>5.52%</td> <td>8,864</td> <td>160,604</td> </tr> <tr> <td>Protected Areas</td> <td>3.88%</td> <td>8,236</td> <td>212,208</td> </tr> <tr> <td>Peat</td> <td>11.93%</td> <td>9,668</td> <td>81,072</td> </tr> <tr> <td>Intact Forest Landscape</td> <td>0.00%</td> <td>0</td> <td>0</td> </tr> </tbody> </table>					Loss, all years (ha)	TREE COVER EXTENT 2000 (ha)	Tree Cover Loss	31.40%	178,061	567,150	Primary Forest	5.52%	8,864	160,604	Protected Areas	3.88%	8,236	212,208	Peat	11.93%	9,668	81,072	Intact Forest Landscape	0.00%	0	0							
		Loss, all years (ha)	TREE COVER EXTENT 2000 (ha)																															
Tree Cover Loss	31.40%	178,061	567,150																															
Primary Forest	5.52%	8,864	160,604																															
Protected Areas	3.88%	8,236	212,208																															
Peat	11.93%	9,668	81,072																															
Intact Forest Landscape	0.00%	0	0																															
Commodity Risk	<p><b>Palm Risk Analysis</b></p> <table border="1"> <thead> <tr> <th rowspan="2"></th> <th colspan="4">Threats</th> <th colspan="3">Values</th> </tr> <tr> <th>Deforestation</th> <th>Peat</th> <th>Protected Areas</th> <th>Fires</th> <th>Forest</th> <th>Peat</th> <th>Protected Areas</th> </tr> </thead> <tbody> <tr> <td>Amount</td> <td>27ha</td> <td>24,350ha</td> <td>8,056ha</td> <td>14/yr</td> <td>179,320ha</td> <td>89,625ha</td> <td>214,105ha</td> </tr> <tr> <td>Risk Level</td> <td>Low</td> <td>Low</td> <td>High</td> <td>Low</td> <td>Medium</td> <td>Medium</td> <td>High</td> </tr> </tbody> </table>				Threats				Values			Deforestation	Peat	Protected Areas	Fires	Forest	Peat	Protected Areas	Amount	27ha	24,350ha	8,056ha	14/yr	179,320ha	89,625ha	214,105ha	Risk Level	Low	Low	High	Low	Medium	Medium	High
	Threats				Values																													
	Deforestation	Peat	Protected Areas	Fires	Forest	Peat	Protected Areas																											
Amount	27ha	24,350ha	8,056ha	14/yr	179,320ha	89,625ha	214,105ha																											
Risk Level	Low	Low	High	Low	Medium	Medium	High																											
Mill Priority Threat Value	<p><b>Mill Priority HistoryThreat + Value</b></p> 																																	

The following mapping is used as an indicator to indicate the potential environmental risks of the assessed palm oil mill.

Legend	
	Land Cover – Primary Forests 2001
	RSPO oil palm concession
	Protected areas (2018) -Strict nature resource
	Protected areas (2018) -National Park



### C. Social Impact Assessment

1. Social Impact Assessment is carried out as well during the mill assessment.
2. The representatives from the mill were made to understand the important pillars of good social responsibility practices, mandatory compliance of national labour laws & human rights, and the need to improve social engagement with the local community.
3. The findings of the social impact assessment are outlines in the following table:

No.	Social Impact Assessment Criteria	Conclusion
1.	Compliance of National laws & Regulations	<b>Yes</b>
2.	Availability of Labour Policy	<b>Yes</b>
3.	Implementing Measures to Ensure the Elimination of Child and Forced Labor	<b>Yes</b>
4.	Availability of clearly written and understandable worker's contract for foreign guest workers	<b>Yes</b>
5.	Freedom of Association	<b>Yes</b>
6.	No exploitation of human rights of workers and local communities	<b>Yes</b>
7.	Safe & Healthy Working Environment	<b>Yes</b>
8.	Compliance with worker's minimum standard of Housing & Amenities Act 1990	<b>Yes</b>
9.	Availability of Complaint Platform & Grievance Mechanism	<b>Yes</b>
10.	CSR/Community Contribution	<b>Yes</b>
11.	Fair Pricing	<b>Yes</b>

*Disclaimers:*

*The traceability to plantation assessment is carried out through observation, documentation reviews and interview based on Mewah's Sustainable Palm Oil Policy and Mewah's Supplier Assessment Guidelines. The above findings are collected through multiple sampling methodologies during the assessment date. The information contained in this report may contain confidential, proprietary, privileged and/or private information. It is only intended for the users of Mewah Group Sustainability Dashboard.*