



PUBLIC SUMMARY REPORT

TRACEABILITY TO PLANTATION ASSESSMENT

Name of Parent Company: Johor Plantations Berhad

Name of Palm Oil Mill: Palong Cocoa Palm Oil Mill

Mill MPOB License No.: 578392004000

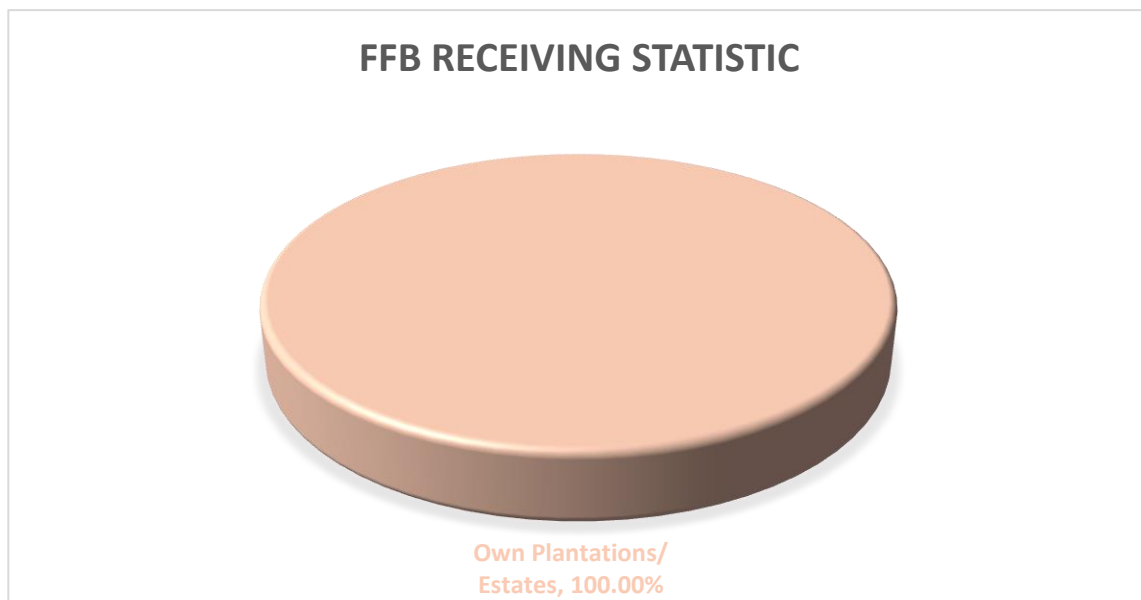
Mill Address: KB 504, 85009 Segamat, Johor

GPS Coordinate of Palm Oil Mill: 2.706414, 102.785011

Supplied Mewah's Refineries: Mewaholeo Industries Sdn Bhd
(Pasir Gudang)

Assessment Date: 13th July 2023 (Thursday)

A. Fresh Fruit Bunch (FFB) Traceability:

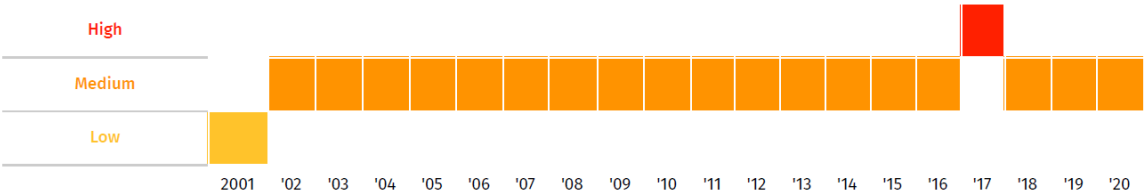


FFB Sources	TTP Score	Overall TTP Score %
Own Plantations/ Estates	100%	100%
3 rd Party Plantations/ Estates	NA	
Dealers	NA	
Smallholders	NA	





B. Environmental Risk Analysis

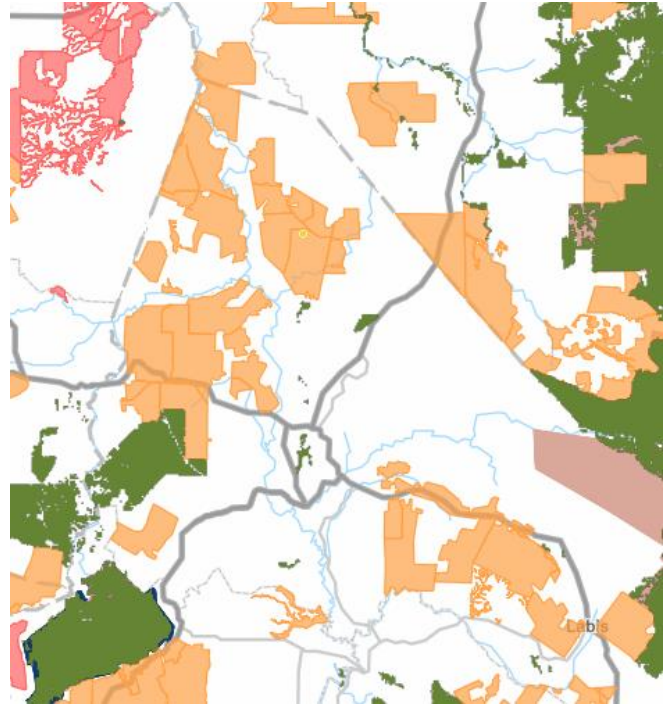
Assessment Date: 12st July 2023

1. Environmental risk assessment is carried out within theoretical FFB catchment area (50km radius) in Palong Cocoa Palm Oil Mill.
2. The overall environmental risk ranking of Palong Cocoa Palm Oil Mill is summarized as follows.

Summary	Mill Priority (Threat + Value)	Threat (Overall)	Value (Overall)																																										
	Medium	High	Low																																										
Forest change	<p>Percentage of Historic Area Lost</p> <table border="1"> <thead> <tr> <th></th> <th></th> <th>Loss, all years (ha)</th> <th>TREE COVER EXTENT 2000 (ha)</th> </tr> </thead> <tbody> <tr> <td>Tree Cover Loss</td> <td>63.14%</td> <td>433,773</td> <td>687,005</td> </tr> <tr> <td>Primary Forest</td> <td>33.16%</td> <td>48,707</td> <td>146,889</td> </tr> <tr> <td>Protected Areas</td> <td>13.10%</td> <td>11,876</td> <td>90,634</td> </tr> <tr> <td>Peat</td> <td>60.04%</td> <td>7,410</td> <td>12,341</td> </tr> <tr> <td>Intact Forest Landscape</td> <td>0.00%</td> <td>0</td> <td>0</td> </tr> </tbody> </table>					Loss, all years (ha)	TREE COVER EXTENT 2000 (ha)	Tree Cover Loss	63.14%	433,773	687,005	Primary Forest	33.16%	48,707	146,889	Protected Areas	13.10%	11,876	90,634	Peat	60.04%	7,410	12,341	Intact Forest Landscape	0.00%	0	0																		
		Loss, all years (ha)	TREE COVER EXTENT 2000 (ha)																																										
Tree Cover Loss	63.14%	433,773	687,005																																										
Primary Forest	33.16%	48,707	146,889																																										
Protected Areas	13.10%	11,876	90,634																																										
Peat	60.04%	7,410	12,341																																										
Intact Forest Landscape	0.00%	0	0																																										
Commodity Risk	<p>Palm Risk Analysis</p> <table border="1"> <thead> <tr> <th rowspan="2"></th> <th colspan="4">Threats</th> <th colspan="3">Values</th> </tr> <tr> <th>Deforestation</th> <th>Peat</th> <th>Protected Areas</th> <th>Fires</th> <th>Forest</th> <th>Peat</th> <th>Protected Areas</th> </tr> </thead> <tbody> <tr> <td>Amount</td> <td>5,465ha</td> <td>10,170ha</td> <td>10,298ha</td> <td>58/yr</td> <td>105,211ha</td> <td>14,407ha</td> <td>92,142ha</td> </tr> <tr> <td>Risk Level</td> <td>High</td> <td>Low</td> <td>High</td> <td>Low</td> <td>Low</td> <td>Low</td> <td>Medium</td> </tr> </tbody> </table>				Threats				Values			Deforestation	Peat	Protected Areas	Fires	Forest	Peat	Protected Areas	Amount	5,465ha	10,170ha	10,298ha	58/yr	105,211ha	14,407ha	92,142ha	Risk Level	High	Low	High	Low	Low	Low	Medium											
	Threats				Values																																								
	Deforestation	Peat	Protected Areas	Fires	Forest	Peat	Protected Areas																																						
Amount	5,465ha	10,170ha	10,298ha	58/yr	105,211ha	14,407ha	92,142ha																																						
Risk Level	High	Low	High	Low	Low	Low	Medium																																						
Mill Priority Threat Value	<p>Mill Priority HistoryThreat + Value</p>  <table border="1"> <thead> <tr> <th>Year</th> <th>Priority</th> </tr> </thead> <tbody> <tr><td>2001</td><td>Low</td></tr> <tr><td>'02</td><td>Medium</td></tr> <tr><td>'03</td><td>Medium</td></tr> <tr><td>'04</td><td>Medium</td></tr> <tr><td>'05</td><td>Medium</td></tr> <tr><td>'06</td><td>Medium</td></tr> <tr><td>'07</td><td>Medium</td></tr> <tr><td>'08</td><td>Medium</td></tr> <tr><td>'09</td><td>Medium</td></tr> <tr><td>'10</td><td>Medium</td></tr> <tr><td>'11</td><td>Medium</td></tr> <tr><td>'12</td><td>Medium</td></tr> <tr><td>'13</td><td>Medium</td></tr> <tr><td>'14</td><td>Medium</td></tr> <tr><td>'15</td><td>Medium</td></tr> <tr><td>'16</td><td>Medium</td></tr> <tr><td>'17</td><td>High</td></tr> <tr><td>'18</td><td>Medium</td></tr> <tr><td>'19</td><td>Medium</td></tr> <tr><td>'20</td><td>Medium</td></tr> </tbody> </table>			Year	Priority	2001	Low	'02	Medium	'03	Medium	'04	Medium	'05	Medium	'06	Medium	'07	Medium	'08	Medium	'09	Medium	'10	Medium	'11	Medium	'12	Medium	'13	Medium	'14	Medium	'15	Medium	'16	Medium	'17	High	'18	Medium	'19	Medium	'20	Medium
Year	Priority																																												
2001	Low																																												
'02	Medium																																												
'03	Medium																																												
'04	Medium																																												
'05	Medium																																												
'06	Medium																																												
'07	Medium																																												
'08	Medium																																												
'09	Medium																																												
'10	Medium																																												
'11	Medium																																												
'12	Medium																																												
'13	Medium																																												
'14	Medium																																												
'15	Medium																																												
'16	Medium																																												
'17	High																																												
'18	Medium																																												
'19	Medium																																												
'20	Medium																																												

The following mapping is used as an indicator to indicate the potential environmental risks of the assessed palm oil mill.

Legend	
	Land Cover – Primary Forests 2001
	RSPO oil palm concession
	Protected areas (2018) -Strict nature resource
	Protected areas (2018) -National Park



C. Social Impact Assessment

1. Social Impact Assessment is carried out as well during the mill assessment.
2. The representatives from the mill were made to understand the important pillars of good social responsibility practices, mandatory compliance of national labour laws & human rights, and the need to improve social engagement with the local community.
3. The findings of the social impact assessment are outlines in the following table:

No.	Social Impact Assessment Criteria	Conclusion
1.	Compliance of National laws & Regulations	Yes
2.	Availability of Labour Policy	Yes
3.	Implementing Measures to Ensure the Elimination of Child and Forced Labor	Yes
4.	Availability of clearly written and understandable worker's contract for foreign guest workers	Yes
5.	Freedom of Association	Yes
6.	No exploitation of human rights of workers and local communities	Yes
7.	Safe & Healthy Working Environment	Yes
8.	Compliance with worker's minimum standard of Housing & Amenities Act 1990	Yes
9.	Availability of Complaint Platform & Grievance Mechanism	Yes
10.	CSR/Community Contribution	Yes
11.	Fair Pricing	Yes

Disclaimers:

The traceability to plantation assessment is carried out through observation, documentation reviews and interview based on Mewah's Sustainable Palm Oil Policy and Mewah's Supplier Assessment Guidelines. The above findings are collected through multiple sampling methodologies during the assessment date. The information contained in this report may contain confidential, proprietary, privileged and/or private information. It is only intended for the users of Mewah Group Sustainability Dashboard.