

**PUBLIC SUMMARY REPORT**
**TRACEABILITY TO PLANTATION ASSESSMENT**

**Name of Parent Company:** Victory Eng Hoe Plantations Sdn. Bhd.

**Name of Palm Oil Mill:** Southern Malay Palm Oil Mill

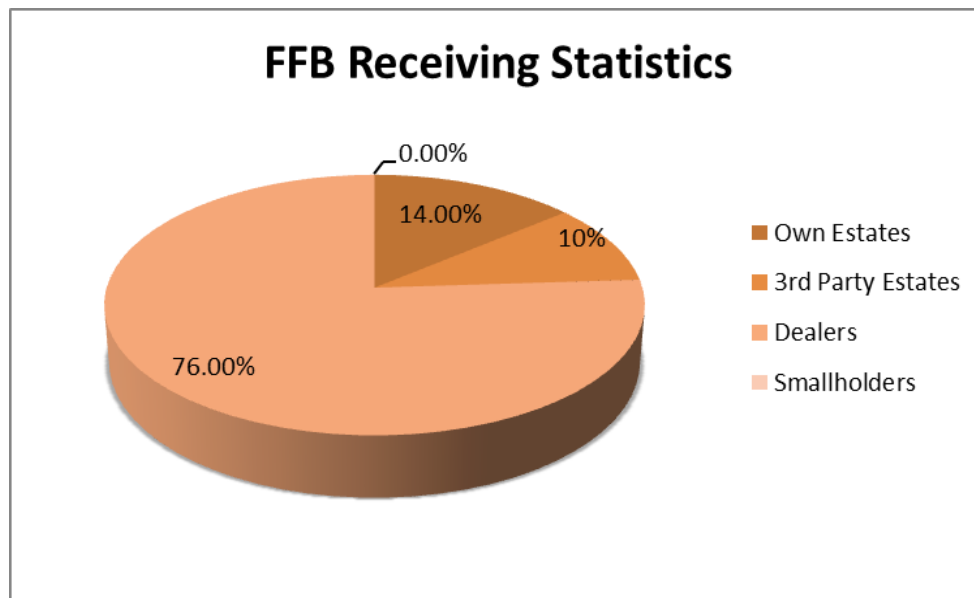
**Mill MPOB License No.:** 500059104000

**Mill Address:** Lot 914, Mukim Rengam Batu 41 Jalan Johor Bahru/Air Hitam Simpang Renggam, 86200 Kluang Johor.

**GPS Coordinate of Palm Oil Mill:** 1.78215, 103.36534

**Supplied Mewah's Refineries:** Mewaholeo Industries Sdn Bhd (Pasir Gudang)

**Assessment Date:** 5<sup>th</sup> July 2017 (Wednesday)

**A. Fresh Fruit Bunch (FFB) Traceability:**


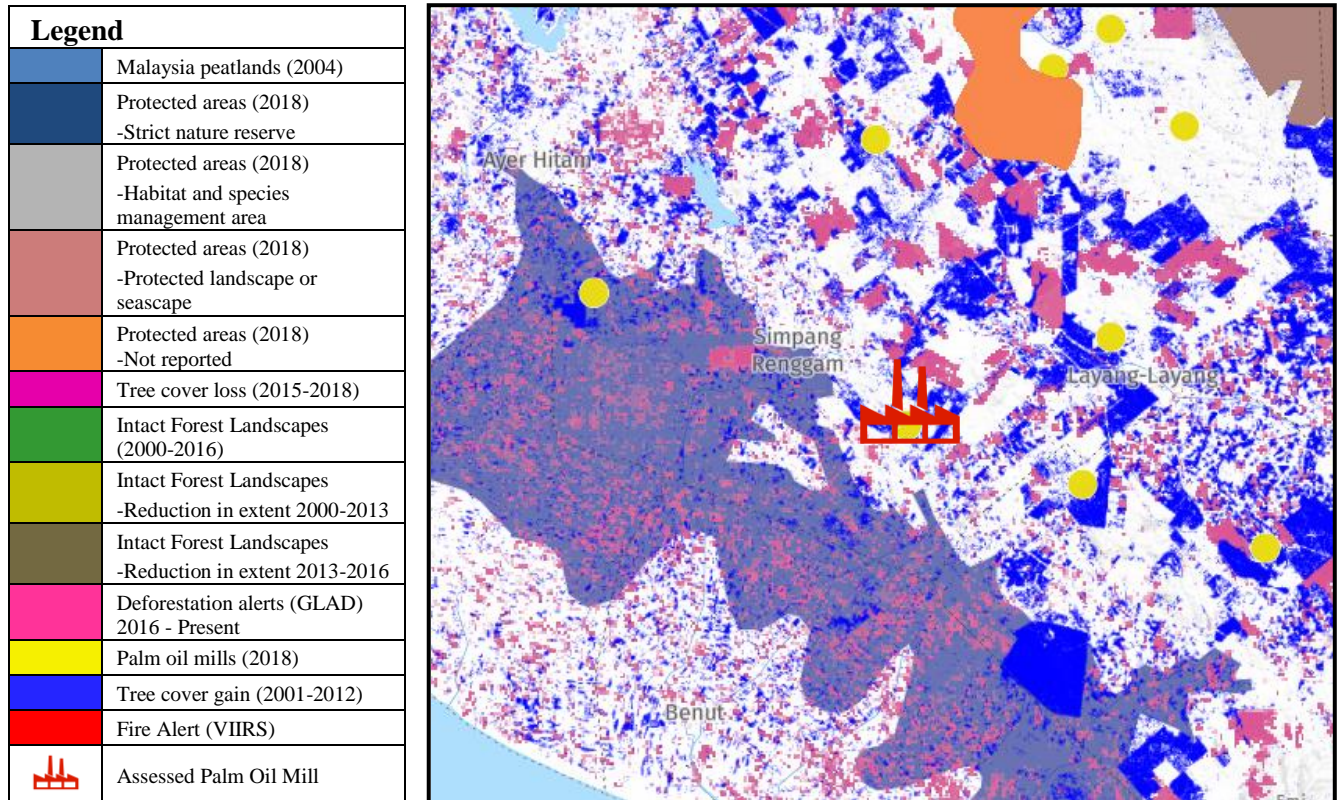
FFB Sources	Traceability Score	Overall TTP Score %
<b>Own Plantations/ Estates</b>	100%	<b>100%</b>
<b>3<sup>rd</sup> Party Plantations/ Estates</b>	100%	
<b>Dealers</b>	100%	
<b>Smallholders</b>	Not Applicable	

**B. Environmental Risk Analysis**

1. Environmental risk assessment is carried out within theoretical FFB catchment area (50km radius) in Southern Malay Palm Oil Mill using Global Forest Watch (GFW) tool.
2. The overall environmental risk ranking of Southern Malay Palm Oil Mill is summarized as follows.

Potential Environmental Risk Factors						
Rate of Tree Cover Loss	Tree Cover Loss on Primary Forest	Potential Future Loss in Primary Forest	Tree Cover Loss on Peat	Tree Cover Loss on Protected Area	Tree Cover Loss on Carbon Dense Area	Fire Activity
Medium	Low	Low	Medium	Medium	Medium	Medium Low

The following mapping is used as an indicator to indicate the potential environmental risks of the assessed palm oil mill.



### C. Social Impact Assessment

1. We also carried out social impact assessment during the mill assessment.
2. The mill representatives were made to understand the important pillars of good social responsibility practices, mandatory compliance of national labour laws & human rights, and the needs to improve social engagement with local community.

The findings of the social impact assessment are outlines in the following table:

<b>Respect of Workers &amp; Local Community Right</b>	Yes
<b>Compliance with Safety &amp; Health</b>	Yes
<b>Compliance with National Labour Laws and Regulations</b>	Yes
<b>Compliance with Housing &amp; Amenities Act 1990</b>	Partial Compliance
<b>Respect of FPIC</b>	Yes
<b>CSR/Community Contribution</b>	Yes
<b>Availability of grievance mechanism</b>	No
<b>Fair &amp; Equitable Trading</b>	Yes

*Disclaimers:*

*The traceability to plantation assessment is carried out through observation, documentation reviews and interview based on Mewah's Sustainable Palm Oil Policy and Mewah's Supplier Assessment Guidelines. The above findings are collected through multiple sampling methodologies during the assessment date. The information contained in this report may contain confidential, proprietary, privileged and/or private information. It is only intended for the users of Mewah Group Sustainability Dashboard.*