

**PUBLIC SUMMARY REPORT**

**TRACEABILITY TO PLANTATION ASSESSMENT**

**Name of Parent Company:** Prosper Group of Companies

**Name of Palm Oil Mill:** Prosper Palm Oil Mill

**Mill MPOB License No.:** 500071104000

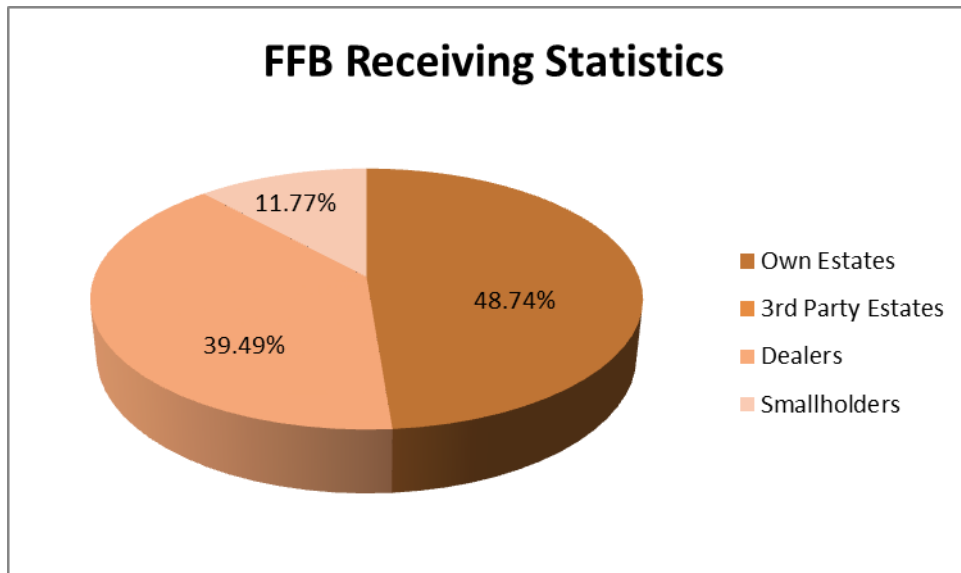
**Mill Address:** Ladang 162, Ladang Geddes, Bahau-Keratong Highway, Bahau, 72120, Jempol, Negeri Sembilan

**GPS Coordinate of Palm Oil Mill:** 2.890428, 102.522749

**Supplied Mewah’s Refineries:** Mewah-Oils Sdn Bhd (Port Klang), Ngo Chew Hong (M) Sdn Bhd (Semenyih), & Mewaholeo Industries Sdn Bhd (Pasar Gudang)

**Assessment Date:** 5<sup>th</sup> December 2017 (Tuesday)

**A. Fresh Fruit Bunch (FFB) Traceability:**



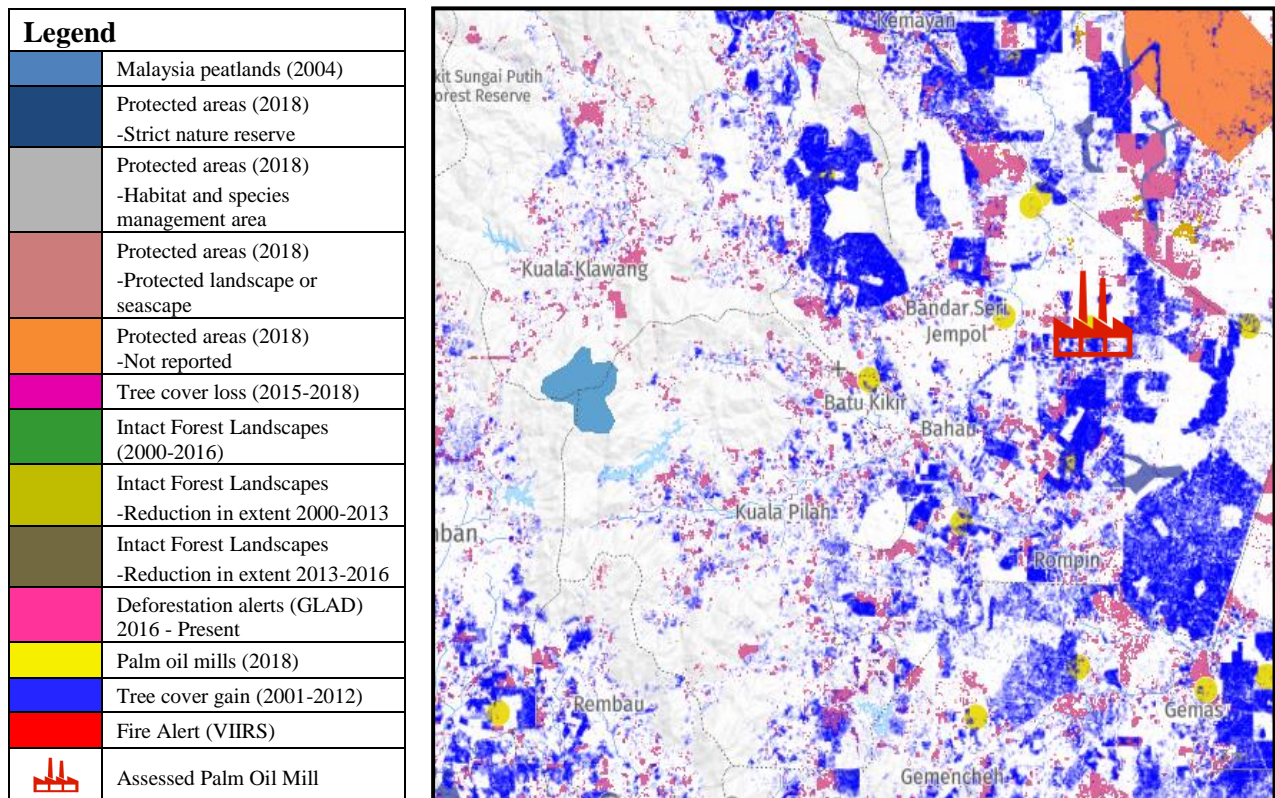
| FFB Sources                                | Traceability Score | Overall TTP Score % |
|--|--------------------|---------------------|
| Own Plantations/ Estates                   | 100%               | <b>100%</b>         |
| 3 <sup>rd</sup> Party Plantations/ Estates | Not Applicable     |                     |
| Dealers                                    | 100%               |                     |
| Smallholders                               | 100%               |                     |

**B. Environmental Risk Analysis**

1. Environmental risk assessment is carried out within theoretical FFB catchment area (50km radius) in Prosper Palm Oil Mill using Global Forest Watch (GFW) tool.
2. In the overall environmental risk ranking, Prosper Palm Oil Mill is summarized as follows.

| Potential Environmental Risk Factors |                                   |   |                         |                                   |                                      |               |
|--------------------------------------|-----------------------------------|---|-------------------------|-----------------------------------|--------------------------------------|---------------|
| Rate of Tree Cover Loss              | Tree Cover Loss on Primary Forest | Potential Future Loss in Primary Forest | Tree Cover Loss on Peat | Tree Cover Loss on Protected Area | Tree Cover Loss on Carbon Dense Area | Fire Activity |
| High                                 | Low                               | Low                                     | Medium                  | Medium                            | High                                 | Medium low    |

The following mapping is used as an indicator to indicate the potential environmental risks of the assessed palm oil mill.



### C. Social Impact Assessment

1. We also carried out social impact assessment during the mill assessment.
2. The mill representatives were made to understand the important pillars of good social responsibility practices, mandatory compliance of national labour laws & human rights, and the needs to improve social engagement with local community.

The findings of the social impact assessment are outlines in the following table:

|   |     |
|---|-----|
| <b>Respect of Workers &amp; Local Community Right</b>       | Yes |
| <b>Compliance with Safety &amp; Health</b>                  | Yes |
| <b>Compliance with National Labour Laws and Regulations</b> | Yes |
| <b>Compliance with Housing &amp; Amenities Act 1990</b>     | Yes |
| <b>Respect of FPIC</b>                                      | Yes |
| <b>CSR/Community Contribution</b>                           | Yes |
| <b>Availability of grievance mechanism</b>                  | Yes |
| <b>Fair &amp; Equitable Trading</b>                         | Yes |

*Disclaimers:*

*The traceability to plantation assessment is carried out through observation, documentation reviews and interview based on Mewah's Sustainable Palm Oil Policy and Mewah's Supplier Assessment Guidelines. The above findings are collected through multiple sampling methodologies during the assessment date. The information contained in this report may contain confidential, proprietary, privileged and/or private information. It is only intended for the users of Mewah Group Sustainability Dashboard.*