

**PUBLIC SUMMARY REPORT**

**TRACEABILITY TO PLANTATION ASSESSMENT**

**Name of Parent Company:** Felcra Berhad

**Name of Palm Oil Mill:** Kilang Sawit Felcra Berhad Maran

**Mill MPOB License No.:** 500246204000

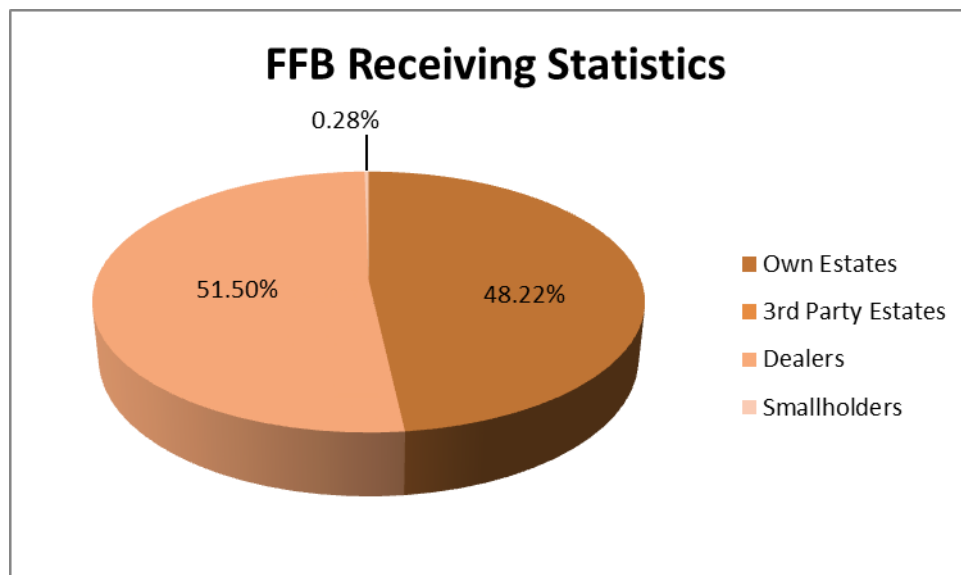
**Mill Address:** Simpang Jengka, Peti Surat 69, 26500 Maran, Pahang

**GPS Coordinate of Palm Oil Mill:** 3.57179, 102.68507

**Supplied Mewah’s Refineries:** Mewah-Oils Sdn Bhd (Port Klang), & Ngo Chew Hong Oils & Fats (M) Sdn Bhd (Semenyih)

**Assessment Date:** 10<sup>th</sup> Aug 2017 (Thursday)

**A. Fresh Fruit Bunch (FFB) Traceability:**



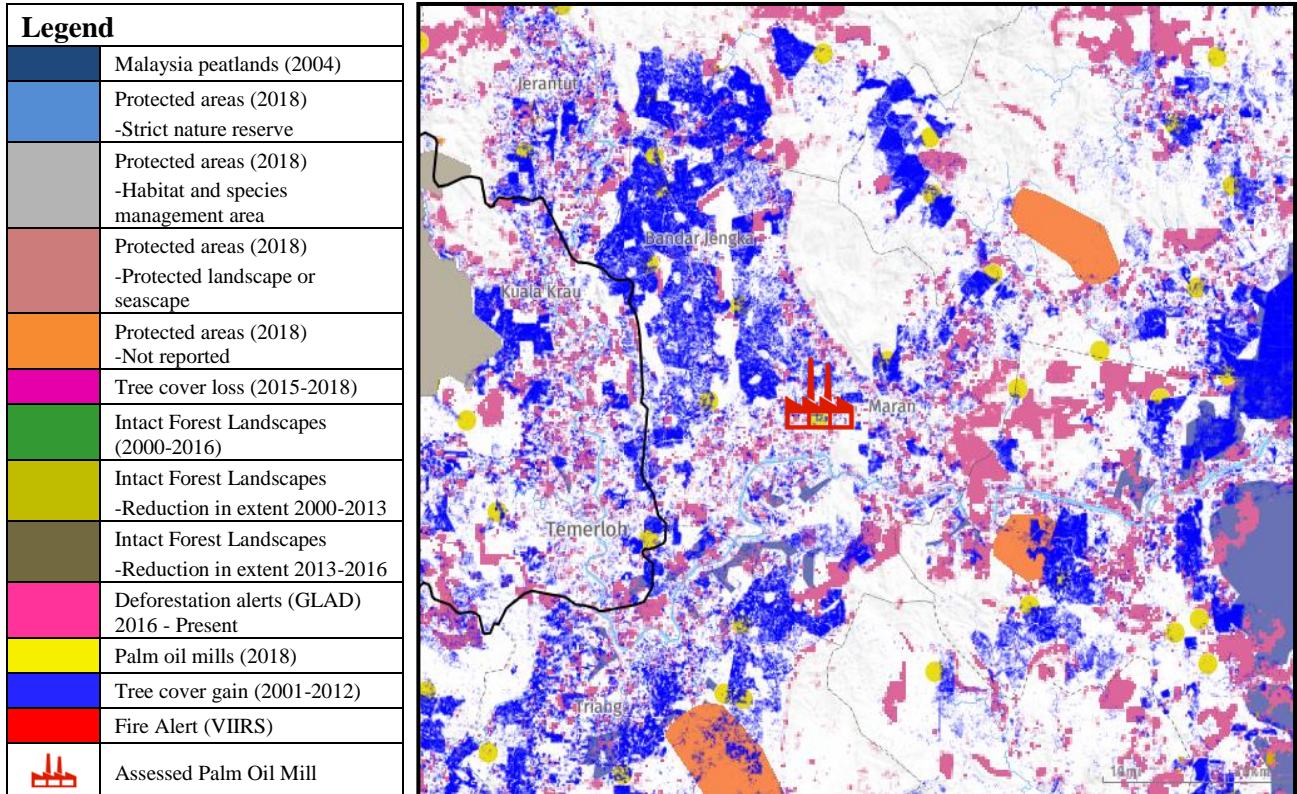
FFB Sources	Traceability Score	Overall TTP Score %
Own Plantations/ Estates	0%	<b>51.50%</b>
3 <sup>rd</sup> Party Plantations/ Estates	Not Applicable	
Dealers	100%	
Smallholders	0%	

**B. Environmental Risk Analysis**

1. Environmental risk assessment is carried out within theoretical FFB catchment area (50km radius) in Kilang Sawit Felcra Berhad Maran using Global Forest Watch (GFW) tool.
2. The overall environmental risk ranking of Kilang Sawit Felcra Berhad Maran is summarized as follows.

Potential Environmental Risk Factors						
Rate of Tree Cover Loss	Tree Cover Loss on Primary Forest	Potential Future Loss in Primary Forest	Tree Cover Loss on Peat	Tree Cover Loss on Protected Area	Tree Cover Loss on Carbon Dense Area	Fire Activity
Medium high	Low	Medium low	Medium	Medium high	Medium high	Medium low

The following mapping is used as an indicator to indicate the potential environmental risks of the assessed palm oil mill.



### C. Social Impact Assessment

1. We also carried out social impact assessment during the mill assessment.
2. The mill representatives were made to understand the important pillars of good social responsibility practices, mandatory compliance of national labour laws & human rights, and the needs to improve social engagement with local community.

The findings of the social impact assessment are outlines in the following table:

<b>Respect of Workers &amp; Local Community Right</b>	Yes
<b>Compliance with Safety &amp; Health</b>	Yes
<b>Compliance with National Labour Laws and Regulations</b>	Yes
<b>Compliance with Housing &amp; Amenities Act 1990</b>	Yes
<b>Respect of FPIC</b>	Yes
<b>CSR/Community Contribution</b>	Yes
<b>Availability of grievance mechanism</b>	Yes
<b>Fair &amp; Equitable Trading</b>	Yes

*Disclaimers:*

*The traceability to plantation assessment is carried out through observation, documentation reviews and interview based on Mewah's Sustainable Palm Oil Policy and Mewah's Supplier Assessment Guidelines. The above findings are collected through multiple sampling methodologies during the assessment date. The information contained in this report may contain confidential, proprietary, privileged and/or private information. It is only intended for the users of Mewah Group Sustainability Dashboard.*